

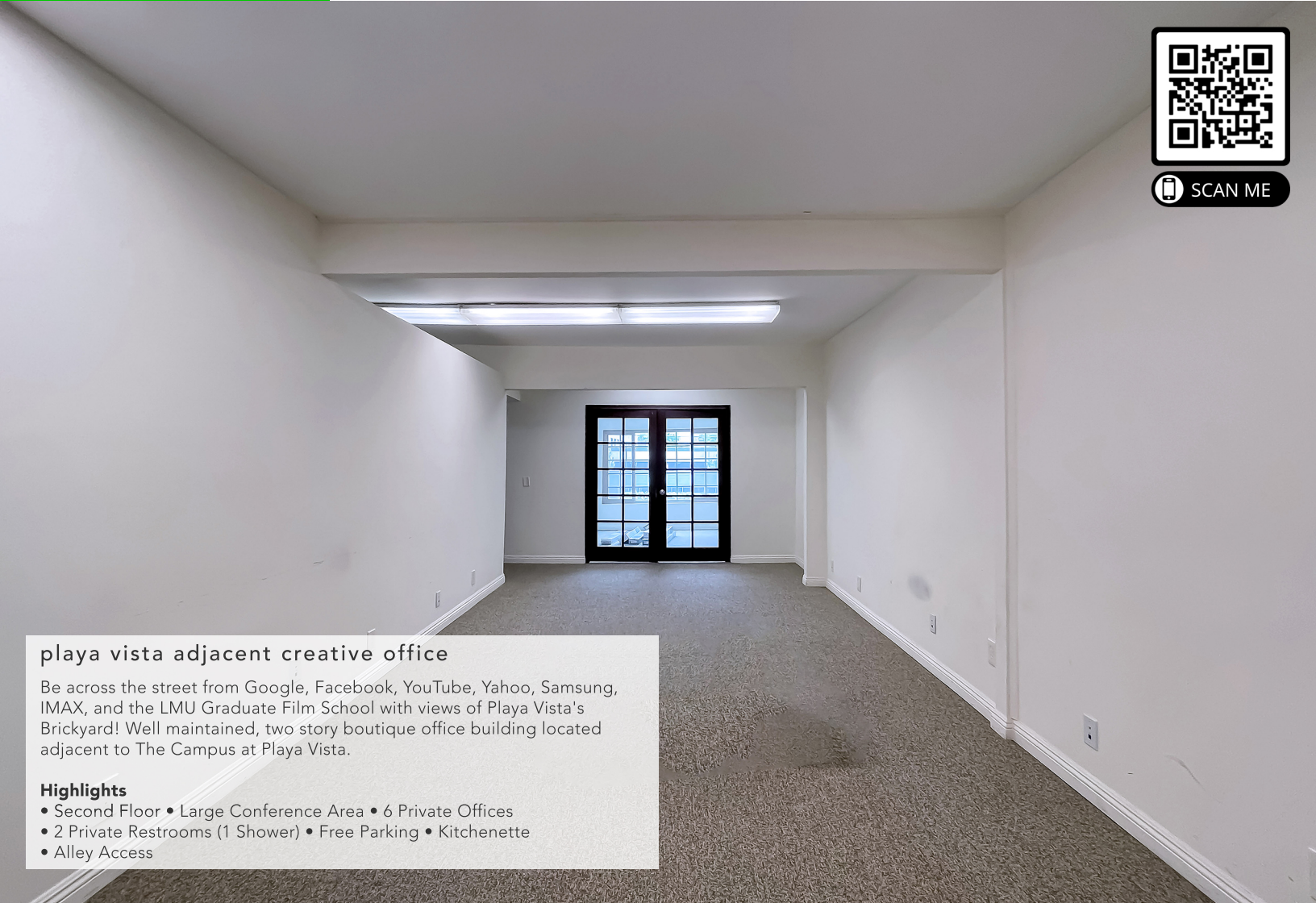
lease

jefferson offices

12039 Jefferson Blvd, Culver City, CA 90230



SCAN ME



playa vista adjacent creative office

Be across the street from Google, Facebook, YouTube, Yahoo, Samsung, IMAX, and the LMU Graduate Film School with views of Playa Vista's Brickyard! Well maintained, two story boutique office building located adjacent to The Campus at Playa Vista.

Highlights

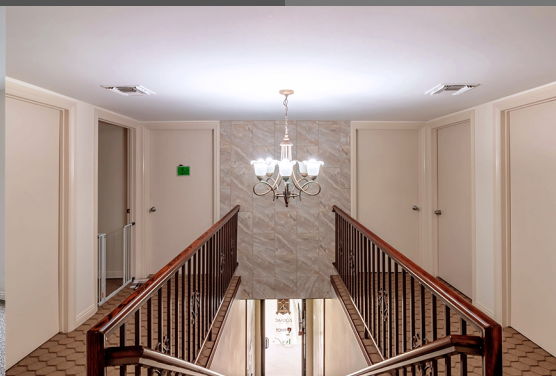
- Second Floor • Large Conference Area • 6 Private Offices
- 2 Private Restrooms (1 Shower) • Free Parking • Kitchenette
- Alley Access

office
space type

± 2,500 SF
rentable SF

6 reserved
parking

\$1.90/SF
price



310.915.8088

6700 S Centinela Ave, First Floor

residential & commercial

welcome@playarealtyca.com

playa realty

CA DRE# 01251369