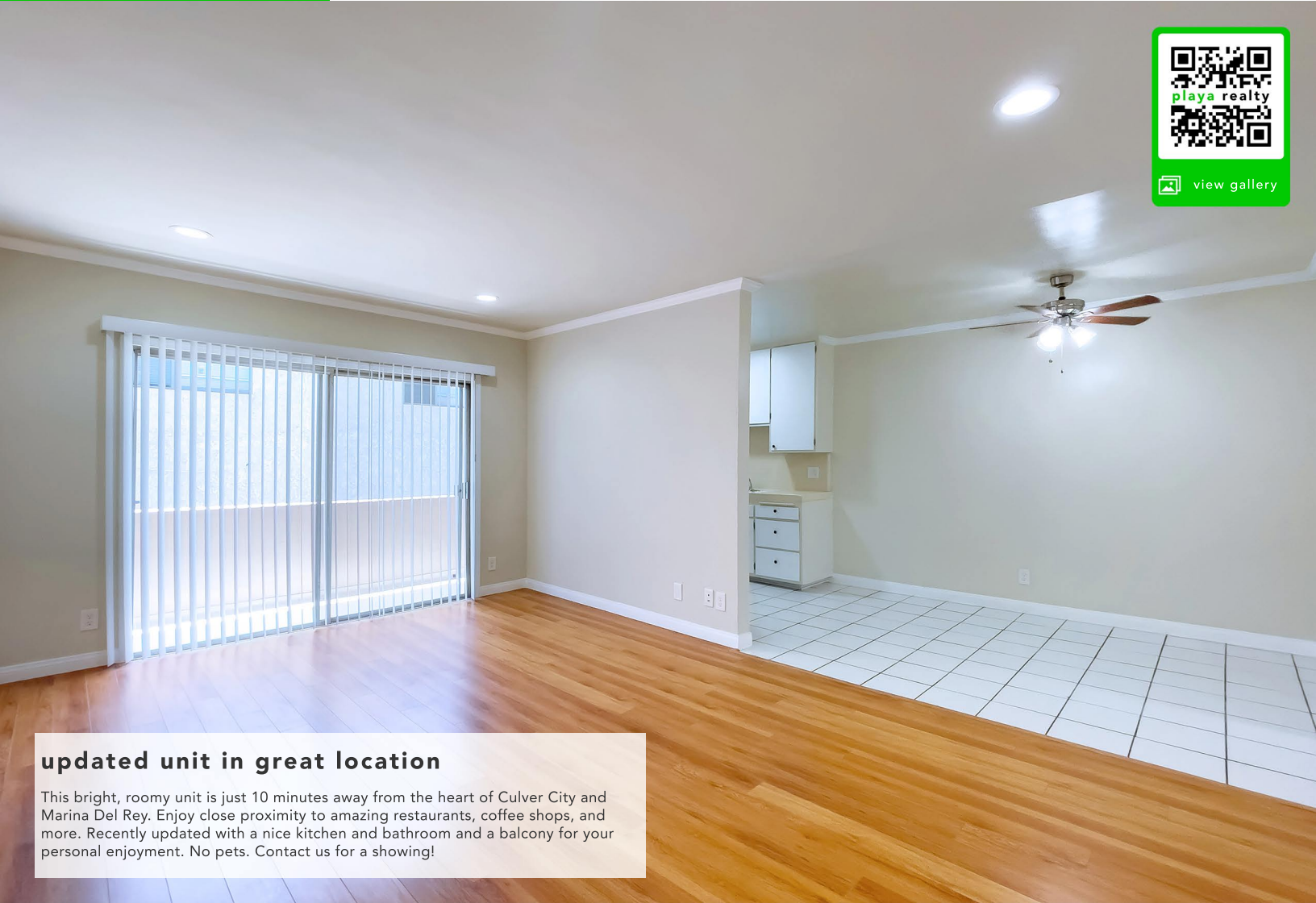


lease

# two bedroom in palms

4027 McLaughlin Ave #8, Los Angeles, CA 90066



### updated unit in great location

This bright, roomy unit is just 10 minutes away from the heart of Culver City and Marina Del Rey. Enjoy close proximity to amazing restaurants, coffee shops, and more. Recently updated with a nice kitchen and bathroom and a balcony for your personal enjoyment. No pets. Contact us for a showing!

**2/1**  
bed/bath

**Parking  
Included**

**Laundry  
On Site**

**\$2,000/mo**



**310.915.9000**

3816 Main St, Culver City

residential & commercial

welcome@playarealtyca.com

**playa realty**

CA DRE# 01251369